

Always on your side to  
serve your clients better...

Official Distributor Indonesia :



**PT. Aerocom Global Sejahtera**  
Jl. Pangeran Tubagus Angke  
Kom. Duta Square Blok A No.8  
Jakarta Barat 11460 - Indonesia

Phone +62 21 5645366, 56940766-68  
Fax +62 21 56940765  
info@aerocom-global.co.id  
www.aerocom.co.id

**yuyama CO.,LTD**  
**yuyama MFG.,LTD**

3-3-1 Meishinguchi Toyonaka,Osaka 561-0841 Japan  
Tel ;+81-6-7635-6312 Fax ;+81-6-7635-6313  
E-mail (International Sales):ys\_trade@yuyama.co.jp



Yuyama MFG Co., Ltd has obtained ISO9001 (Year of 2000) on March 2003. It is not only for managing quality control process but also pursuing the 100% customer satisfaction. In addition, Okayama factory has obtained ISO14001, which is for environment management system, on September 2003.



Yuyama HQ Website:  
[www.yuyama.co.jp](http://www.yuyama.co.jp)



Yuyama U.S.A Website:  
[www.yuyamarx.com](http://www.yuyamarx.com)

Litrea III  
Intelligent Edition  
DEBUT!



**Litrea III**  
Compact Fully Automatic Tablet Dispensing Machine

Location Free RFID Canister  
&  
Universal Canister

# Yuyama's original versatile canister

## Universal Canister(UC)

OPTION

- Free from Manual-fill saves your time!
- Error-free guarantees accurate dispensing!



One UC can process various medications! Flexibility increases efficiency!

Just put medications into UC then it's ready! Preventing from a dispensing error, increasing the safety.

### UC accommodates different shapes of medication.

Dispensing exit varies its shape by medication.



Universal Canister(UC)

#### Various shapes of medication

Capsule	Soft capsule	Naked (Swelling)	Naked (Flat)
Oval (Swelling)	Altoxic (Swelling)	Oval (Flat)	Rectangle (Swelling)

\* Example only  
\* There may be a limitation on the applicable shape.

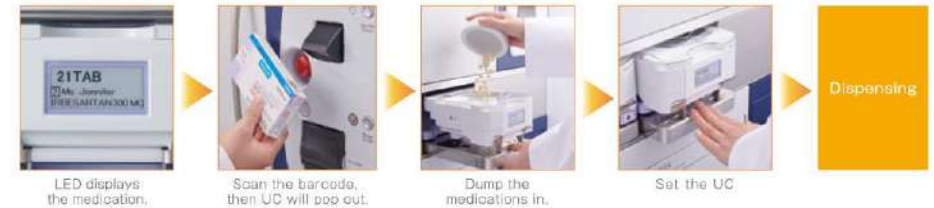
### Lock and Display prevent from the missetting of medication

Only when the medication is verified, UC will be released. In addition, LED shows patient name and medication name.



### Simple and Speedy

Easy to handle. Just dump the medications in, UC will automatically dispense in accordance with the prescription.



### Check medications remaining in UC

In order to enhance the safety, it is recommended to release UC and visually check. When UC is set back, then information on the UC will be reset.



### Easy cleaning

All components touching medication are detachable. It's easy to clean.



\* 3 parts to wipe with water

### Used as a medication specified canister

UC can act as a normal canister for one type of medication, if it's frequently used. UC offers various usages flexibly for each case.



\* Decolant is not applicable in UC. Please do not keep medication in it for a long time.

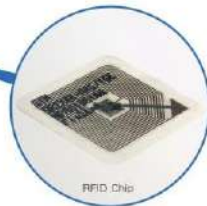
# Safety management for the next generation

## RFID Canister



### RFID Canister recognizes itself.

The canister is equipped with RFID chip to recognize its position in the canister carousel. Wherever the canister is set, Litrea dispenses the medication accurately from the right canister. If you need to take a canister from the carousel, select the medication on T/P or scan the medication barcode, then the canister comes to the front. No need to search it by yourself. RFID chip contains information such as medication name, group canister, and physical limitation for the height of canister position. This can effectively optimize the operation.



## Verification process for the safety

### Cross-checked by RFID and barcode



RFID recognizes the canister



Cross-check by RFID and medication barcode



Barcode scanner reads the medication barcode

To refill the canister securely, Litrea cross-checks by 2 different mediums, RFID chip of the canister and barcode of the medication package. This will avoid the duplication of reading.

Place the canister on the refill-table to read RFID, and scan the medication barcode. Then, the cross-check result is displayed on the T/P screen. It is an intelligent function for the next generation.

## DTA Tray

DTA (Detachable Tablet Adapter) accommodates all medications other than canister prepared.



Journal printer

DTA Tray prepares 48 slots, which can accommodate 2 weeks dosing times (for 3 times daily) at a time. Of course for longer than that; all medications can be accommodated by filling 2 times or more. Journal printer gives the DTA filling instruction with quantity and location on the tray image, which can be ON/OFF as required.



# Technology that effectively streamlines your work

## Automatic 4-color penliner

OPTION

Automatic 4-color penliner distinguishes sachets easily.



As per the needs of times, pharmacies servicing long term care patients are increasing. People want to distinguish different sachets by color but it always cost a lot. In order to resolve this issue and make the pharmacy's service easier, Yuyama developed the unit that draws a color line while packing. This can be made by dosing time or facility and also reduce the pharmacy's workload.



4-color penliner unit

### Different coloring and line type by facility

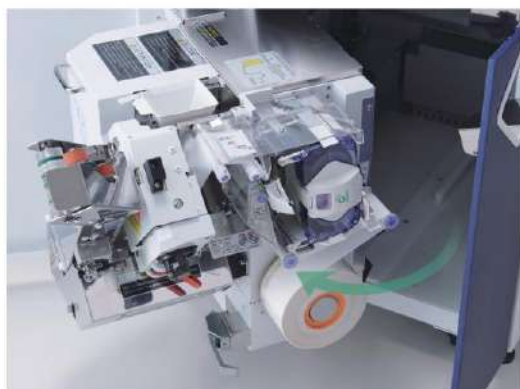
Facility A	M	N	E	N	M
Facility B	M	N	E	N	M

Line types are solid line or dotted line.

### Smooth and natural line

Continuous line	M	M	M	N	N
Line per sachet	M	M	M	N	N

## Packing mechanism



### Packing method

Double folded sachet & Heater-roller give both of easy setting and accurate sealing.

Easy setting and accurate sealing are now achieved together by the new method. Not to detract the packing mission, it gives the easiest operation for the pharmacy.

The packing unit is pull-round structure. Simply pull toward the front and rotate it. The wide-openable heater-roller and the double folded sachet roll have also made replacing of sachet roll incredibly easier than ever.

## Half cutter

OPTION

Half-cut canister option automatically cuts the whole tablet into 1/2.

A new idea that no one ever had, has been developed by Yuyama. A whole tablet is automatically cut into 1/2 in the canister, then it is directly packed together with whole tablets in a sachet. This function significantly reduces the pharmacy's workload and avoid human error. This option can be implemented from the beginning, or later time if you want to enjoy this benefit.



The canister with half-cut function  
**HALF CUT!**



Litre III gives you full automation for 1/2.



\* Half-cut option decreases the total number of canisters in the main unit.  
\* Not all tablet shape is applicable for this function.

## Easy-to-tear sachet for patients

### Sachet

#### Cleaning leader

The fore-end clean the heater-roller when the new sachet roll is set. It prolongs the lifetime of the machine.



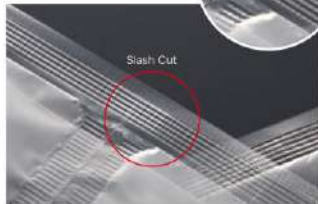
#### Sachet size

The size can be selected from 60, 70, 76, 80, 90 mm / sachet by 5 sizes according to the volume of contents.



#### Slash Cut

High quality sachet "Slash Cut" enables itself to be cut from any sealed area. However it's not torn off by tying with an elastic band.



Easy!



Slit for smooth cut

A slit is made per sachet while sealing

#### Packing speed

By the carousel mechanism, it keeps the steady high speed packing of maximum 60 sachets per minute. This feature has been inherited generations to LitreaIII.



4-color print

## Refill ribbon Eco and Expenses Friendly

### Refill ribbon



The ribbon has 1-color type (Black) and 4-color type options. These can be selected as the pharmacy's needs. The refill ribbon can also reduce the environmental load and running cost.

4-color Refill ribbon

#### Easy and Eco

Simply changing the ribbon, no need to discard the case. Eco consumable.



Simply change the refill ribbon in the case.

#### Various printing

The ribbon can be selected from 1-color type (Black) and 4-color type as required.



Dedicated cassette for the ribbon

Various indications such as barcode, QR, Figure, and Pictogram can be printed. This provides patients with easy recognition and nurses with accurate handling.



4-colors print

Monochrome print

Pictogram print

## 3 colors

The LitreaIII is available in three colors. A chic and luxurious "Navy Blue", a beautifully deep "Wine Red" and a fresh "Mint Green". All three colors present as calm and help your LitreaIII match its environment.



Navy blue  
\* 112FDXII(UC4-Option) image

Wine red

Mint green

## 2 Types

The smallest and smartest in the world with 112 canisters and 136 canisters.



**YS-TR-112FDX III**  
**112 canisters**

\* Half-cut canister,  
Universal canister  
and Penliner in option

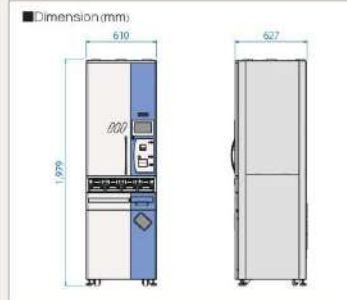


**YS-TR-136FDX III**  
**136 canisters**

\* Half-cut canister,  
Universal canister  
and Penliner in option

### YS-TR-112FDX III

Packing speed	60 sachets / min
Tablet detection	Photoelectric sensor
Tablet distribution	Centre falling
Sachet print	Free size font, Layout free, Horizontal/Vertical, 4 colors option
Sachet size	60/70/78/80/90 mm Length x 70 mm Width
Sachet material	Cellophane and Polyester (Double folded)
Canister identification	RFID
Tablet canister	Main unit : 112 (M size)
Canister searching	Canister number, Medication name, Barcode
Tablet manual filling	48 sachets / time
Voice message	Error and Warning message
Power consumption	860VA (MAX)
Power supply	AC 120/220/230/240 V ± 10 V, 50/60 Hz
Dimension	610 Width x 627 Depth x 1.979 Height xmm * Excluding protrusion and fall-prevention board
Weight	268kg approx. (additional 12 kg and 17kg for UC2 and UC4)
Option	Automatic 4-color penliner Universal canister (2 or 4), Half-cut canister (2, 4, 6 or 8)



### YS-TR-136FDX III

Packing speed	60 sachets / min
Tablet detection	Photoelectric sensor
Tablet distribution	Centre falling
Sachet print	Free size font, Layout free, Horizontal/Vertical, 4 colors option
Sachet size	60/70/78/80/90 mm Length x 70 mm Width
Sachet material	Cellophane and Polyester (Double folded)
Canister identification	RFID
Tablet canister	Main unit : 112 (M size), Extension unit : 24 (M size)
Canister searching	Canister number, Medication name, Barcode
Tablet manual filling	48 sachets / time
Voice message	Error and Warning message
Power consumption	860VA (MAX)
Power supply	AC 120/220/230/240 V ± 10 V, 50/60 Hz
Dimension	775 Width x 627 Depth x 1.979 Height xmm * Excluding protrusion and fall-prevention board
Weight	349kg approx. (additional 12 kg and 17kg for UC2 and UC4)
Option	Automatic 4-color penliner Universal canister (2 or 4), Half-cut canister (2, 4, 6 or 8)

